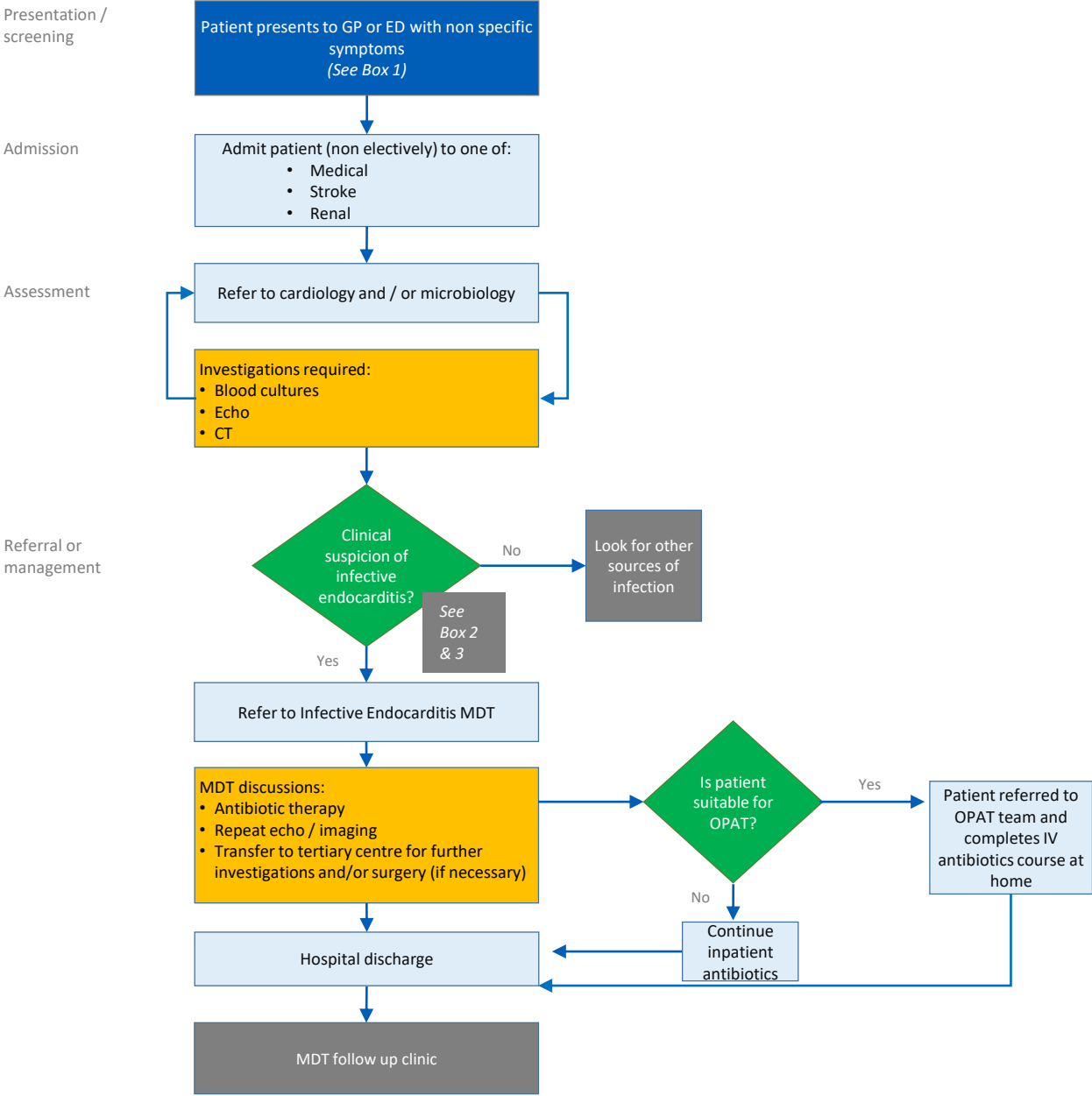


South London infective endocarditis pathway



Box 1	<p>Non specific symptoms may include:</p> <ul style="list-style-type: none">• High temperature• Chills• Night sweats• Fatigue• Muscle and joint pain
-------	--

Box 2	<p>Risk factors for infective endocarditis include:</p> <ul style="list-style-type: none">• Previous infective endocarditis• Artificial heart valves• Intracardiac devices• Congenital heart defects/valve abnormalities• Degenerative valve disease• Intravenous drug user• Haemodialysis• Immunosuppressed/immunocompromised• Poor oral hygiene
-------	---

Box 3	<p>Modified Duke's Criteria for diagnosis of infective endocarditis</p> <p>Major criteria:</p> <ul style="list-style-type: none">• Two separate positive blood cultures with microorganisms typical for IE• Echocardiographic evidence of endocardial involvement (valvular vegetations, abscesses, dehiscence of a prosthetic valve) <p>Minor criteria:</p> <ul style="list-style-type: none">• Predisposing heart condition or IV drug use• Temperature > 38C• Vascular phenomena: major arterial emboli, septic pulmonary infarcts, mycotic aneurysms, intracranial haemorrhage, conjunctival haemorrhage, Janeway lesions• Immunological phenomena: glomerulonephritis, Osler nodes, Roth spots, rheumatoid factor• Microbiological evidence: positive blood culture but not meeting major criterion, or serological evidence of active infection with organism consistent with infective endocarditis <p>For the diagnosis of endocarditis to be made, the following must be present:</p> <ul style="list-style-type: none">• 2 major criteria• 1 major criterion and 3 minor criteria• 5 minor criteria
-------	--